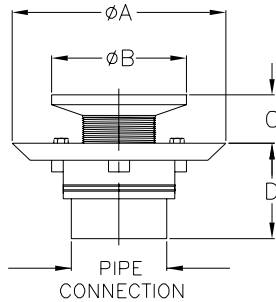


JONESPEC® FLOOR DRAINS



SHOWER DRAIN

- Recommended in showers where a membrane is generally used.
- Adjustable head to meet finished floor elevations.
- Furnished with a 6-1/2" [165mm] diameter PVC, ABS or cast iron body, beveled clamp collar and head assembly.
- Complete with a slotted stainless steel, secured strainer.

Body Type	Model Number	Dimensions in Inches [mm]				Box Qty.
		Pipe Conn.	A	B	C	
PVC	FD-2254-PV2	2" [51]	6-1/2" [165]	4-1/4" [108]	1" [25] Min. 1-3/4" [44] Max.	20
ABS	FD-2254-AB2	2" [51]	6-1/2" [165]	4-1/4" [108]	1" [25] Min. 1-3/4" [44] Max.	20
No-Hub	*FD-2254-NH2	2" [51]	6-1/2" [165]	4-1/4" [108]	1" [25] Min. 1-3/4" [44] Max.	8
Push-On	*FD-2254-PO2	2" [51]	6-1/2" [165]	4-1/4" [108]	1" [25] Min. 1-3/4" [44] Max.	8
Caulk	*FD-2254-IC2	2" [51]	6-1/2" [165]	4-1/4" [108]	1" [25] Min. 1-3/4" [44] Max.	8
IPS	*FD-2254-IP2	2" [51]	6-1/2" [165]	4-1/4" [108]	1" [25] Min. 1-3/4" [44] Max.	8

*Chrome-plated brass strainer with cast iron clamp device furnished standard.

Options

Suffix	Description
-CP	Chrome-Plated Brass Strainer
-PB	Polished Brass Strainer