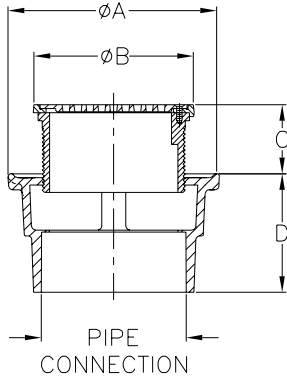


JONESPEC® FLOOR DRAINS



ADJUSTABLE FLOOR DRAIN

- Recommended for finished floor areas where a membrane is not required.
- Designed for foot traffic and light cart applications.
- The adjustable ABS head is complete with a nickel frame and grate.

Body Type	Model Number	Dimensions in Inches [mm]				Box Qty.	
		Pipe Conn.	A	B	C		
No-Hub	FD-2320-NH2	2" [51]	6-1/2" [165]	5" [127]	1-11/16" [43] Min. 2-9/16" [65] Max.	3-3/4" [95]	4
	FD-2320-NH3	3" [76]	6-1/2" [165]	5" [127]	1-11/16" [43] Min. 2-9/16" [65] Max.	3-3/4" [95]	4
	FD-2320-NH4	4" [102]	6-1/2" [165]	5" [127]	1-11/16" [43] Min. 2-9/16" [65] Max.	3-3/4" [95]	4
Push-On	FD-2320-PO2	2" [51]	6-1/2" [165]	5" [127]	1-11/16" [43] Min. 2-9/16" [65] Max.	4" [102]	4
	FD-2320-PO3	3" [76]	6-1/2" [165]	5" [127]	1-11/16" [43] Min. 2-9/16" [65] Max.	4" [102]	4
	FD-2320-PO4	4" [102]	6-1/2" [165]	5" [127]	1-11/16" [43] Min. 2-9/16" [65] Max.	4" [102]	4

Options

Suffix	Description
-CP	Chrome Plated
-P	1/2" [13] Trap Primer Connection
-R5	5" [127] Diameter Nickel Head Assembly
-R6	6" [152] Diameter Nickel Head Assembly
-R7	7" [178] Diameter Nickel Head Assembly
-R8	8" [203] Diameter Nickel Head Assembly
-VP	Vandal Proof